



READY TO USE
PLASTERS

with high **thermal-insulation**
properties



THERMAL

Insulation & Chemicals Division

THERMAL INSULATION . REFURBISHMENT AND DEHUMIDIFICATION

REFURBISH the past ... To build THE FUTURE

Old buildings are a common cultural heritage. Houses have to guarantee healthy and comfortable environmental conditions. The use of good products correctly installed ensures that the refurbishment process eliminates problems caused by the ingress of cold and damp. Edilteco offers **the most complete range of products designed specifically to address issues commonly found in refurbishment, dehumidification and restoration.** With refurbishment today being intrinsically linked with improving the thermal performance of buildings, Isolsan is the perfect product with its thermal and hygroscopic properties.

ISOLSAN® ADVANTAGES

Premixed dehumidifying plaster with high thermal insulating power based on macro-porous water binding, virgin expanded polystyrene beads, special additives.

- Suitable to meet the performances required by building regulations and standards.
- It meets all the current regulation requirements if laid in its suitable thicknesses.
- A solution to rising damp.
- Suitable also for high thickness walls.
- Fast application time.
- It can be used for any architectural shape.
- Compatible with irregular façades or complicated architectural features.
- High vapour permeability.
- Health and safety: it does not contain nor release chemicals agents.
- It maintains its thermal insulation properties over time.
- It can be applied on uneven and mixed surfaces.
- It can be laid on all the substrates.
- Few restrictions in the choice of finish.
- It can be applied manually and/or mechanically.



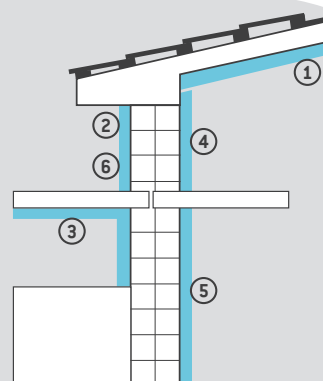
DEHUMIDIFICATION

For detailed technical data please consult the table on the following page.

MAIN APPLICATION FIELDS

Internal and external.

- 1] Thermal insulation for ceilings.
- 2] Dehumidification / Refurbishment and external thermal insulation.
- 3] Elimination of thermal bridges (pillars, beams, support beams for attics, etc...).
- 4] Prevention and elimination of the interstitial and superficial condensation.
- 5] Dehumidification / Refurbishment and internal wall insulation (IWI) and party walls.
- 6] Protection of walls from rain (façades, beams, pillar, etc...).



Phases of application of Isolteco® and Isolsan®.

Thermal Division ... what is it?

The primary aim of Edilteco is to produce building materials that promote and enable a healthy living environment. Edilteco has, for a long time, recognised the importance of **thermal insulation** in buildings and the need to create an effective thermal barrier between the indoor and outdoor conditions. Edilteco has also long understood and appreciated the energy saving, economic and environmental benefits that result from thermal insulation.



THERMAL

A complete range of thermally insulating plasters.

ISOLTECO®

ADVANTAGES

Ready to use plaster with high thermal insulating power based on selected pre-batched binders, perfectly spherical virgin expanded polystyrene beads, mixed with special additives.

- Suitable to meet the requirements of building regulations and standards.
- High thermal insulation properties.
- Elimination of thermal bridges.
- Good soundproofing properties.
- For indoor and outdoor use (once cured it is unaffected by rain, moisture or low/high temperatures).
- Can be left as the finished surface when cured or as a surface ready to accept nearly all types of finishing layers.
- It significantly speeds up the application of finishing coats.
- It can be used for any architectural shape.
- Compatible with irregular façades or complicated architectural features.
- High vapour permeability.
- Health and safety: it does not contain nor release chemicals agents.
- It maintains its thermal insulation properties over time.
- It can be applied on uneven and mixed surfaces.
- It can be laid on all the substrates.
- Few restrictions in the choice of finish.
- It can be applied manually and/or mechanically.



THERMAL INSULATION

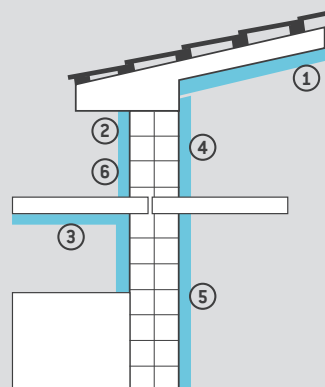
ISO 9001:1991 - EN 12667:2001 - UNI 7061:1999
 $\lambda_D =$
0,058
W/mK

For detailed technical data please consult the table on the following page.

MAIN APPLICATION FIELDS

Internal and external.

- 1) Thermal insulation for ceilings.
- 2) External thermal insulation.
- 3) Elimination of thermal bridges (pillars, beams, support beams for attics, etc...).
- 4) Prevention and elimination of the interstitial and superficial condensation.
- 5) Internal wall insulation (IWI) and party walls.
- 6) Protection of walls from rain (façades, beams, pillars, etc...).



External wall insulation (EWI)



Elimination of thermal bridges. Can be formed into decorative shapes (moldings, cornices, skirtings, etc...).



ISOLTECO® and ISOLSAN®

TECHNICAL CHARACTERISTICS / PALLETIZATION / CONSUMPTION AND YIELD

ISOLTECO® / ISOLSAN® Ready to use thermal-insulating plasters		
TECHNICAL CHARACTERISTICS	ISOLTECO®	ISOLSAN®
Dry density	150 Kg/m ³ (UNI EN 1015-10)	230 Kg/m ³ (UNI EN 1015-10)
Fire reactivity	A2-s1,d0 (EN 13501-1:2007)	A2-s1,d0 (EN 13501-1:2007)
Adhesion	0,1 N/mm ² (UNI EN 1015-12:2002)	0,1 N/mm ² (UNI EN 1015-12:2002)
Water absorption by capillarity	0,00060 Kg/m ² s ^{0.5} (UNI EN 1015-18:2004)	0,00060 Kg/m ² s ^{0.5} (UNI EN 1015-18:2004)
Resistance to water vapor diffusion μ	9 (UNI EN 1015-19:2008)	9 (UNI EN 1015-19:2008)
Coefficient of thermal conductivity λ_0	0,058 W/mK (EN 12667:2001)	0,0631 W/mK (UNI 7745/77)
Compressive strength	1,16 N/mm ² (UNI 6132)	1,28 N/mm ² (UNI 6132)
Flexural strength	0,42 N/mm ² (UNI 6133)	0,38 N/mm ² (UNI 6133)
Sound insulation on wall R_w ($C;C_{tr}$) _{with}	42 dB (*) (UNI EN ISO 140-3)	42 dB (*) (UNI EN ISO 140-3)
Increase of sound insulating power $\Delta R_{w,direct}$	7 dB (*) (UNI EN ISO 140-16)	7 dB (*) (UNI EN ISO 140-16)
Specific heat	0,24 kcal/kgK	0,24 kcal/kgK
Durability (frost / thaw)	Evaluated (UNI EN 998-1:2010)	Evaluated (UNI EN 998-1:2010)

(*) Isolteco 6 cm. thickness applied on 8 cm. thickness holed blocks wall with 1.5 cm. layer of cement plaster on the opposite side.

PALLETIZING

Pallets of 40 bags of 60 lt. yield each corresponding to ~ 2.40 m³.



CONSUMPTION AND YIELD

Up to 10 - 12 cm. thickness without net.

THICKNESS	YIELD PER 1 BAG
cm. 2	m ² 3.00
cm. 3	m ² 2.00
cm. 4	m ² 1.50
cm. 5	m ² 1.20
cm. 6	m ² 1.00
cm. 7	m ² 0.86
cm. 8	m ² 0.75
cm. 9	m ² 0.67
cm. 10	m ² 0.60
cm. 15	m ² 0.40
cm. 20	m ² 0.30

A WIDE RANGE OF PRODUCTS FOR: SMOOTHING AND FINISHING

- ECAP® FM Finishing Mortar** Single-layer levelling smoothing plaster.
- ISOLTECO® RASATURA MONOCAP** Single-layer levelling smoothing plaster.
- ECAP® F Fixative** Ready to use universal adhesive fixative, available also with fibres for additional strength.
- ECAP® MC Mineral Colour** Vapour permeable mineral paint.
- ECAP® AC Acrylic Colour** Acrylic finish in paste.
- ECAP® STC Silicate Colour** Silicate based coloured finish.
- ECAP® SC Silicone Colour** Coloured silicon finish in paste.
- ECAP® SP Silicone Paint** Silicon based wall paint.
- ECAP® GC Glamish Colour** Shiny coloured thin-bed finish.
- ECAP® GP Glamish Paint** Shiny ready to use wall painting.
- ECAP® SCL Selfcleaning** Self cleaning mineral coloured finish in paste.
- ECAP® SCLP Selfcleaning Paint** Mineral selfcleaning paint.
- ECAP® STP Silicate Paint** Silicate based ready to use wall paint.
- ECAP® AP Acrylic Paint** Wall painting based on synthetic resins.
- ECAP® EP Elastomeric Paint** Elastomeric ready to use wall painting with organic binder.

Consult price lists and catalogue for accessories.



BENEFITS

LOW ENVIRONMENTAL IMPACT

- Better thermal insulation.
- Lower fuel consumption during transportation because it is lightweight.
- More thermal insulating therefore: lower volumes for the same thermal performances.

LOW DENSITY

- Low weight reduces imposed loads on the structure.

USE FLEXIBILITY

- Less water required in preparation.
- Less water absorbed during mixing.
- Easy to mix and pump.
- Easy and fast application.
- Easy transportation (lightweight).

BUILDING SAFETY

- It improves the structural resistance of the building in case of earthquakes.
- Fire resistance: A2-s1, d0.



- Low environmental impact
- Low density
- Ductility
- Better attitude in case of earthquake



EDILTECO and the environment

The theme of sustainability when applied to buildings can be evaluated from two converging points of view. From one side, it is possible to evaluate the impact that the construction and management of a building will have its whole environment, while from the other hand it is possible to analyze specifically all the technologies that have been used for the building construction, studying the environmental impact of its components and every single material that has been used. The evaluation of a product sustainability is extremely complex, it is not measurable just according to one or more "eco" characteristics, but it is always related to all the factors that interact with the product and the environment during its lifecycle. This issue is further complicated if we think that the product sustainability evaluation is referred to its whole lifecycle, from the raw material to the finished product. According to the life stage that the product is going through, we can meet different environmental impacts. The certification of environmental sustainability is the instrument that allows the declaration of the performances and the environmental impacts that a building has on its territory, including its energy consumption. Edilteco's products meet the criteria of the environmental sustainability protocols that are used to calculate scores and Leed credits.



Ask for the sustainability sheet with LEED scores of the product you are interested in: info@edilteco.com

OUR READY TO USE THERMAL-INSULATING PLASTERS HAVE BEEN CHOSEN FOR

EDILTECO REFERENCES



ARA PACIS MUSEUM
ROME - ITALY



WATERPARK ATLANTICA
CESENATICO (FC) - ITALY



EURODISNEY
PARIS



SAN GIOVANNI BATTISTA CHURCH
CASTELMAGGIORE (BO) - ITALY



UNIVERSITY OF FLORENCE - ITALY



HOTEL KRASNAYA - ODESSA - UKRAINE

EDILTECO, AN INTERNATIONAL SUCCESS

italy . france . benelux . sudamericana



LEGEND

- Edilteco Group
- Partners
- Distributors



360° Insulation

Edilteco S.p.A. Via dell'Industria, 710 . 41038 San Felice sul Panaro (MO) Italy . Ph. +39 0535 82161 . Fax +39 0535 82970
www.edilteco.com | info@edilteco.com



You Tube Consult our technical and application videos on the Edilteco YouTube Channel . www.youtube.com/user/EDILTECOvideo



Edilteco is associated with:

